

# LOST LAKE HILLS

## UNITS TYPE A



① FRONT ELEVATION  
1/4" = 1'-0"



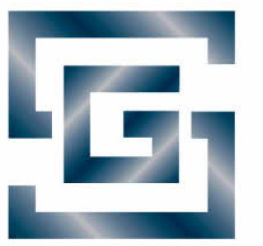
② REAR ELEVATION  
1/4" = 1'-0"



ALLURA FIBRE CEMENT - "DOWNING SLATE"

EXTERIOR FINISHES:

- |   |  |   |
|---|--|---|
| F1 - IKO LAMINATED ARCHITECTURAL ROOFING SHINGLES<br>COLOUR: DUAL BLACK                 | F5 - DOUGLAS FIR TIMBER POST<br>COLOUR: DOWNING SLATE SOLID STAIN                | F9 - 5/4 X 10 BANDBOARD<br>COLOUR: ALLURA - DOWNING SLATE             |
| F2 - FIBER CEMENT SIDEWALL SHINGLES - 7 INCH EXPOSURE<br>COLOUR: ALLURA - DOWNING SLATE | F6 - FIBER CEMENT LAP SIDING - 7 INCH EXPOSURE<br>COLOUR: ALLURA - DOWNING SLATE | F10 - FIBER CEMENT BOARD AND BATTEN<br>COLOUR: ALLURA - DOWNING SLATE |
| F3 - 5/4 X 6 ON 5/4 X 10 BARGEBOARD<br>COLOUR: BLACK                                    | F7 - 42" HIGH ALUMINUM PICKET RAILING<br>COLOUR: BLACK                           | F11 - 5/4 X 8 FASCIA<br>COLOUR: BLACK                                 |
| F4 - 5" "K" STYLE ALUMINUM GUTTER<br>COLOUR: BLACK                                      | F8 - VINYL WINDOWS<br>COLOUR: BLACK EXTERIOR, WHITE INTERIOR                     | F12 - ALUMINUM VENTED SOFFITS<br>COLOUR: IRON ORE                     |



SYLVAIN GIROUX  
DESIGNS

3093 SWALLOW CRESCENT  
NANOOSE BAY, BC  
(250) 954-7347 SYLVAIN@SGRDESIGN.CA

NO.	DESCRIPTION	DATE
1	ISSUED FOR DEVELOPMENT PERMIT	24/10/03
2	COLOUR ADDED TO ELEVATIONS	24/11/12

DRAWINGS AND SPECIFICATIONS, AS INSTRUMENTS OF SERVICE, ARE THE PROPERTY OF SGR DESIGN LTD. THE COPYRIGHT IN THE SAME BEING RESERVED TO THEM. NO REPRODUCTION IS ALLOWED WITHOUT THE PERMISSION OF SGR DESIGN LTD. AND WHEN MADE MUST BEAR ITS NAME. ALL PRINTS TO BE RETURNED.

THIS DRAWING MUST NOT BE SCALED. THE CONTRACTOR IS TO VERIFY ALL DRAWING DIMENSIONS AND DATA NOTED HEREIN WITH CONDITIONS ON THE SITE AND IS HELD RESPONSIBLE FOR REPORTING DISCREPANCIES TO SGR DESIGN LTD. THIS DRAWING IS NOT TO BE USED FOR CONSTRUCTION PURPOSES UNTIL SIGNED BY THE CONSULTANT.

PROJECT:  
**LOST LAKE HILLS**  
  
5300 TANYA DRIVE  
NANAIMO, BC

DISTRICT GROUP

FOURPLEX A - FRONT  
& REAR ELEVATIONS

PROJECT NUMBER: 24-000222  
PLOT DATE: 2024-11-12 10:20:28 AM  
DRAWN BY: SG

A-1.3

SCALE: 1/4" = 1'-0"



# LOST LAKE HILLS

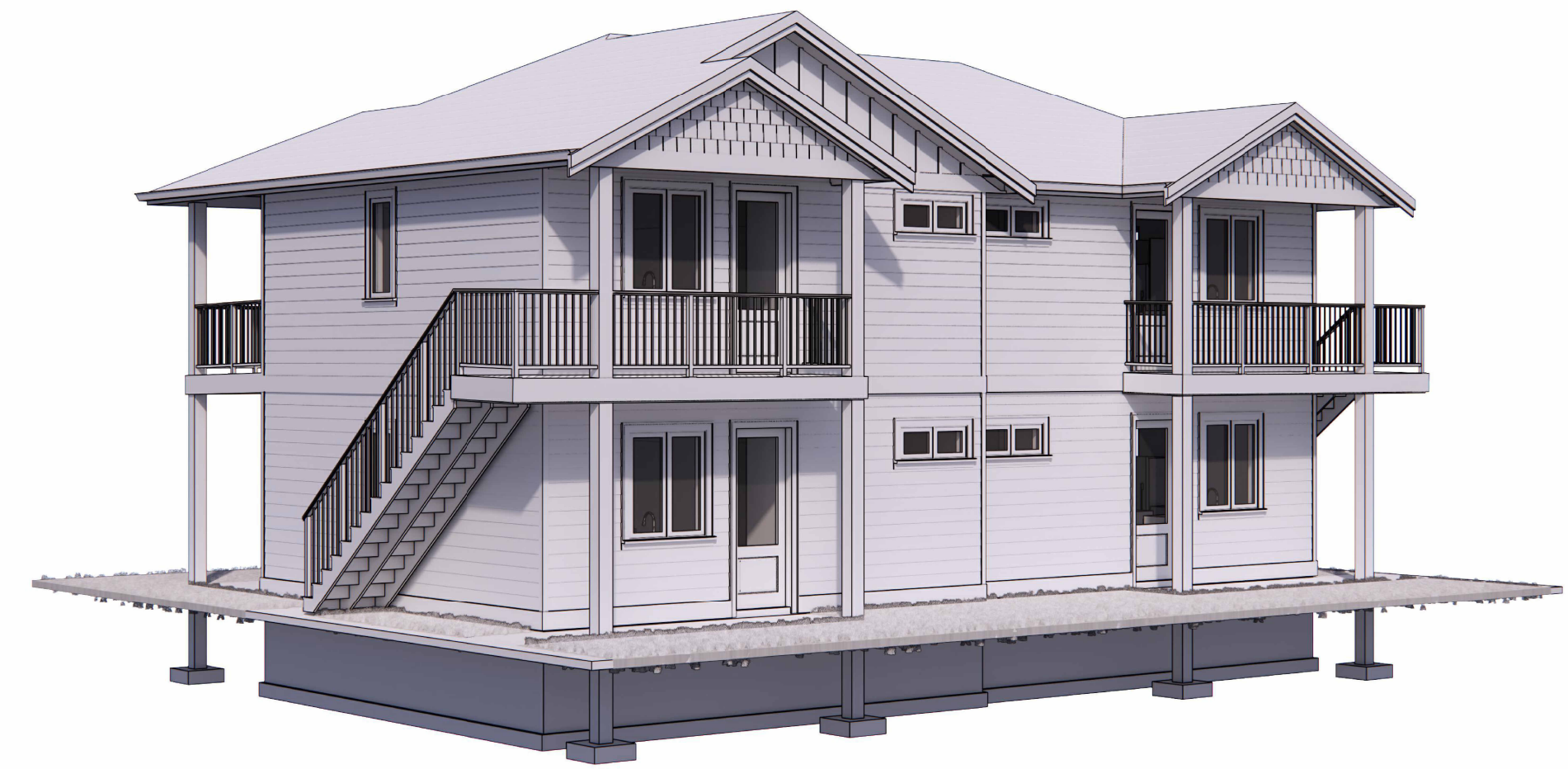
## UNITS TYPE A



① LEFT ELEVATION  
1/4" = 1'-0"



② RIGHT ELEVATION  
1/4" = 1'-0"



### EXTERIOR FINISHES:

- F1 - IKO LAMINATED ARCHITECTURAL ROOFING SHINGLES  
COLOUR: DUAL BLACK
- F2 - FIBER CEMENT SIDEWALL SHINGLES - 7 INCH EXPOSURE  
COLOUR: ALLURA - DOWNING SLATE
- F3 - 5/4 X 6 ON 5/4 X 10 BARGEBOARD  
COLOUR: BLACK
- F4 - 5" "K" STYLE ALUMINUM GUTTER  
COLOUR: BLACK
- F5 - DOUGLAS FIR TIMBER POST  
COLOUR: DOWNING SLATE SOLID STAIN
- F6 - FIBER CEMENT LAP SIDING - 7 INCH EXPOSURE  
COLOUR: ALLURA - DOWNING SLATE
- F7 - 42" HIGH ALUMINUM PICKET RAILING  
COLOUR: BLACK
- F8 - VINYL WINDOWS  
COLOUR: BLACK EXTERIOR, WHITE INTERIOR
- F9 - 5/4 X 10 BANDBOARD  
COLOUR: ALLURA - DOWNING SLATE
- F10 - FIBER CEMENT BOARD AND BATTEN  
COLOUR: ALLURA - DOWNING SLATE
- F11 - 5/4 X 8 FASCIA  
COLOUR: BLACK
- F12 - ALUMINUM VENTED SOFFITS  
COLOUR: IRON ORE



ALLURA FIBRE CEMENT - "DOWNING SLATE"



SYLVAIN GIROUX  
DESIGNS

3093 SWALLOW CRESCENT  
NANOOSE BAY, BC  
(250) 954-7347 SYLVAIN@SGRDESIGN.CA

NO.	DESCRIPTION	DATE
1	ISSUED FOR DEVELOPMENT PERMIT	241003
2	COLOUR ADDED TO ELEVATIONS	241112

DRAWINGS AND SPECIFICATIONS, AS INSTRUMENTS OF SERVICE, ARE THE PROPERTY OF SGR DESIGN LTD. THE COPYRIGHT IN THE SAME BEING RESERVED TO THEM. NO REPRODUCTION IS ALLOWED WITHOUT THE PERMISSION OF SGR DESIGN LTD. AND WHEN MADE MUST BEAR ITS NAME. ALL PRINTS TO BE RETURNED.

THIS DRAWING MUST NOT BE SCALED. THE CONTRACTOR IS TO VERIFY ALL DRAWING DIMENSIONS AND DATA NOTED HEREIN WITH CONDITIONS ON THE SITE AND IS HELD RESPONSIBLE FOR REPORTING DISCREPANCIES TO SGR DESIGN LTD. THIS DRAWING IS NOT TO BE USED FOR CONSTRUCTION PURPOSES UNTIL SIGNED BY THE CONSULTANT.

PROJECT:  
**LOST LAKE HILLS**  
  
5300 TANYA DRIVE  
NANAIMO, BC

DISTRICT GROUP

FOURPLEX A - LEFT &  
RIGHT ELEVATIONS

PROJECT NUMBER 24-000222  
PLOT DATE 2024-11-12 10:19:23 AM  
DRAWN BY SG

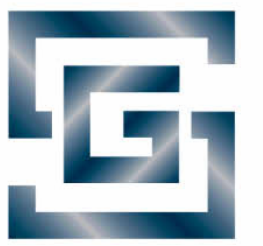
A-1.4

SCALE 1/4" = 1'-0"



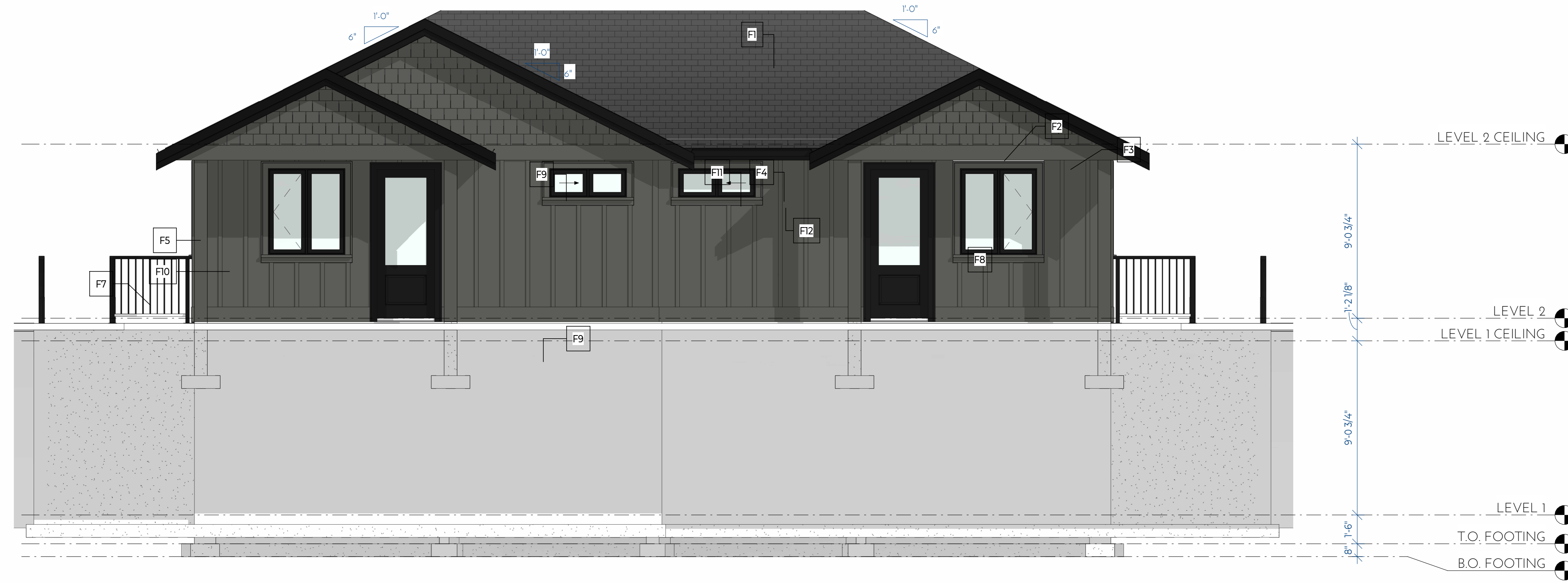
# LOST LAKE HILLS

## UNITS TYPE B



SYLVAIN GIROUX  
DESIGNS

3093 SWALLOW CRESCENT  
NANOOSE BAY, BC  
(250) 954-7347 SYLVAIN@SGRDESIGN.CA



1 FRONT ELEVATION  
1/4" = 1'-0"



2 REAR ELEVATION  
1/4" = 1'-0"

EXTERIOR FINISHES:

- |  |   |  |
|--|---|--|
| F1 - IKO LAMINATED ARCHITECTURAL ROOFING SHINGLES<br>COLOUR: DUAL BLACK              | F5 - DOUGLAS FIR TIMBER POST<br>COLOUR: PEPPERCORN SOLID STAIN                | F9 - 5/4 X 10 BANDBOARD<br>COLOUR: PEPPERCORN                      |
| F2 - FIBER CEMENT SIDEWALL SHINGLES - 7 INCH EXPOSURE<br>COLOUR: ALLURA - PEPPERCORN | F6 - FIBER CEMENT LAP SIDING - 7 INCH EXPOSURE<br>COLOUR: ALLURA - PEPPERCORN | F10 - FIBER CEMENT BOARD AND BATTEN<br>COLOUR: ALLURA - PEPPERCORN |
| F3 - 5/4 X 6 ON 5/4 X 10 BARGEBOARD<br>COLOUR: BLACK                                 | F7 - 42" HIGH ALUMINUM PICKET RAILING<br>COLOUR: BLACK                        | F11 - 5/4 X 8 FASCIA<br>COLOUR: BLACK                              |
| F4 - 5" "K" STYLE ALUMINUM GUTTER<br>COLOUR: BLACK                                   | F8 - VINYL WINDOWS<br>COLOUR: BLACK EXTERIOR, WHITE INTERIOR                  | F12 - ALUMINUM VENTED SOFFITS<br>COLOUR: BLACK                     |



ALLURA FIBRE CEMENT - "PEPPERCORN"

NO.	DESCRIPTION	DATE
1	ISSUED FOR DEVELOPMENT PERMIT	20241003
2	COLOUR ADDED TO ELEVATIONS	20241112

DRAWINGS AND SPECIFICATIONS, AS INSTRUMENTS OF SERVICE, ARE THE PROPERTY OF SGR DESIGN LTD. THE COPYRIGHT IN THE SAME BEING RESERVED TO THEM. NO REPRODUCTION IS ALLOWED WITHOUT THE PERMISSION OF SGR DESIGN LTD. AND WHEN MADE MUST BEAR ITS NAME. ALL PRINTS TO BE RETURNED.

THIS DRAWING MUST NOT BE SCALED. THE CONTRACTOR IS TO VERIFY ALL DRAWING DIMENSIONS AND DATA NOTED HEREIN WITH CONDITIONS ON THE SITE AND IS HELD RESPONSIBLE FOR REPORTING DISCREPANCIES TO SGR DESIGN LTD. THIS DRAWING IS NOT TO BE USED FOR CONSTRUCTION PURPOSES UNTIL SIGNED BY THE CONSULTANT.

PROJECT:  
**LOST LAKE HILLS**  
  
5300 TANYA DRIVE  
NANAIMO, BC

DISTRICT GROUP

FOURPLEX B - FRONT  
& REAR ELEVATIONS

PROJECT NUMBER: 24-000801  
PLOT DATE: 2024-11-12 11:26:16 AM  
DRAWN BY: SG

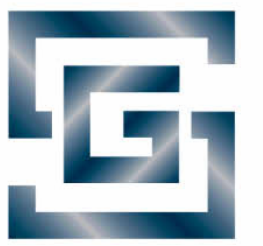
A-1.7

SCALE: 1/4" = 1'-0"



# LOST LAKE HILLS

## UNITS TYPE B



SYLVAIN GIROUX  
DESIGNS

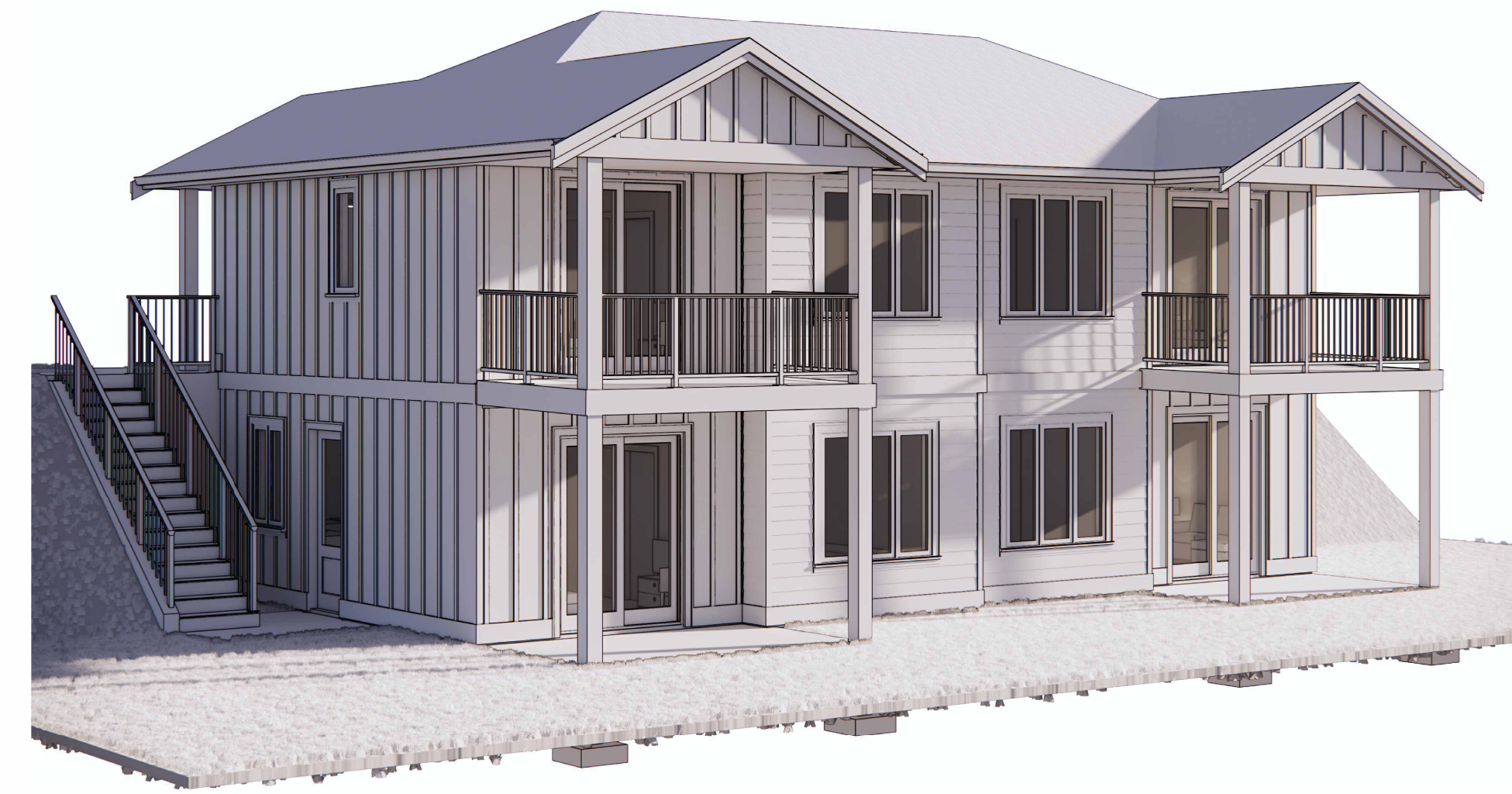
3093 SWALLOW CRESCENT  
NANOOSE BAY, BC  
(250) 954-7347 SYLVAIN@SGRDESIGN.CA



1 LEFT ELEVATION  
1/4" = 1'-0"



2 RIGHT ELEVATION  
1/4" = 1'-0"



EXTERIOR FINISHES:

- F1 - IKO LAMINATED ARCHITECTURAL ROOFING SHINGLES  
COLOUR: DUAL BLACK
- F2 - FIBER CEMENT SIDEWALL SHINGLES - 7 INCH EXPOSURE  
COLOUR: ALLURA - PEPPERCORN
- F3 - 5/4 X 6 ON 5/4 X 10 BARGEBOARD  
COLOUR: BLACK
- F4 - 5" "K" STYLE ALUMINUM GUTTER  
COLOUR: BLACK
- F5 - DOUGLAS FIR TIMBER POST  
COLOUR: PEPPERCORN SOLID STAIN
- F6 - FIBER CEMENT LAP SIDING - 7 INCH EXPOSURE  
COLOUR: ALLURA - PEPPERCORN
- F7 - 42" HIGH ALUMINUM PICKET RAILING  
COLOUR: BLACK
- F8 - VINYL WINDOWS  
COLOUR: BLACK EXTERIOR, WHITE INTERIOR
- F9 - 5/4 X 10 BANDBOARD  
COLOUR: PEPPERCORN
- F10 - FIBER CEMENT BOARD AND BATTEN  
COLOUR: ALLURA - PEPPERCORN
- F11 - 5/4 X 8 FASCIA  
COLOUR: BLACK
- F12 - ALUMINUM VENTED SOFFITS  
COLOUR: BLACK



ALLURA FIBRE CEMENT - "PEPPERCORN"

NO.	DESCRIPTION	DATE
1	ISSUED FOR DEVELOPMENT PERMIT	20241003
2	COLOUR ADDED TO ELEVATIONS	20241112

DRAWINGS AND SPECIFICATIONS, AS INSTRUMENTS OF SERVICE, ARE THE PROPERTY OF SGR DESIGN LTD. THE COPYRIGHT IN THE SAME BEING RESERVED TO THEM. NO REPRODUCTION IS ALLOWED WITHOUT THE PERMISSION OF SGR DESIGN LTD. AND WHEN MADE MUST BEAR ITS NAME. ALL PRINTS TO BE RETURNED.

THIS DRAWING MUST NOT BE SCALED. THE CONTRACTOR IS TO VERIFY ALL DRAWING DIMENSIONS AND DATA NOTED HEREIN WITH CONDITIONS ON THE SITE AND IS HELD RESPONSIBLE FOR REPORTING DISCREPANCIES TO SGR DESIGN LTD. THIS DRAWING IS NOT TO BE USED FOR CONSTRUCTION PURPOSES UNTIL SIGNED BY THE CONSULTANT.

PROJECT:  
**LOST LAKE HILLS**  
  
5300 TANYA DRIVE  
NANAIMO, BC

DISTRICT GROUP

FOURPLEX B - LEFT &  
RIGHT ELEVATIONS

PROJECT NUMBER 24-000801  
PLOT DATE 2024-11-12 11:27:15 AM  
DRAWN BY SG

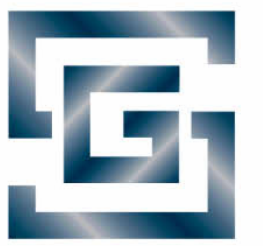
A-1.8

SCALE 1/4" = 1'-0"



# LOST LAKE HILLS

## UNITS TYPE C



SYLVAIN GIROUX  
DESIGNS

3093 SWALLOW CRESCENT  
NANOOSE BAY, BC  
(250) 954-7347 SYLVAIN@SGRDESIGN.CA



① FRONT ELEVATION  
1/4" = 1'-0"

EXTERIOR FINISHES:

- |   |  |   |
|---|--|---|
| F1 - IKO LAMINATED ARCHITECTURAL ROOFING SHINGLES<br>COLOUR: DUAL BLACK                 | F5 - DOUGLAS FIR TIMBER POST<br>COLOUR: TIMBER BARK SOLID STAIN                  | F9 - 5/4 X 10 BANDBOARD<br>COLOUR: VIRTUAL TAUPE                      |
| F2 - FIBER CEMENT SIDEWALL SHINGLES - 7 INCH EXPOSURE<br>COLOUR: ALLURA - VIRTUAL TAUPE | F6 - FIBER CEMENT LAP SIDING - 7 INCH EXPOSURE<br>COLOUR: ALLURA - VIRTUAL TAUPE | F10 - FIBER CEMENT BOARD AND BATTEN<br>COLOUR: ALLURA - VIRTUAL TAUPE |
| F3 - 5/4 X 6 ON 5/4 X 10 BARGEBOARD<br>COLOUR: BLACK                                    | F7 - 42" HIGH ALUMINUM PICKET RAILING<br>COLOUR: BLACK                           | F11 - 5/4 X 8 FASCIA<br>COLOUR: BLACK                                 |
| F4 - 5" "K" STYLE ALUMINUM GUTTER<br>COLOUR: BLACK                                      | F8 - VINYL WINDOWS<br>COLOUR: BLACK EXTERIOR, WHITE INTERIOR                     | F12 - ALUMINUM VENTED SOFFITS<br>COLOUR: BLACK                        |



ALLURA FIBRE CEMENT - "VIRTUAL TAUPE"



② REAR ELEVATION  
1/4" = 1'-0"

NO.	DESCRIPTION	DATE
1	ISSUED FOR DEVELOPMENT PERMIT	2410/03
2	COLOUR ADDED TO ELEVATIONS	2411/12

DRAWINGS AND SPECIFICATIONS, AS INSTRUMENTS OF SERVICE, ARE THE PROPERTY OF SGR DESIGN LTD. THE COPYRIGHT IN THE SAME BEING RESERVED TO THEM. NO REPRODUCTION IS ALLOWED WITHOUT THE PERMISSION OF SGR DESIGN LTD. AND WHEN MADE MUST BEAR ITS NAME. ALL PRINTS TO BE RETURNED.

THIS DRAWING MUST NOT BE SCALED. THE CONTRACTOR IS TO VERIFY ALL DRAWING DIMENSIONS AND DATA NOTED HEREIN WITH CONDITIONS ON THE SITE AND IS HELD RESPONSIBLE FOR REPORTING DISCREPANCIES TO SGR DESIGN LTD. THIS DRAWING IS NOT TO BE USED FOR CONSTRUCTION PURPOSES UNTIL SIGNED BY THE CONSULTANT.

PROJECT:  
**LOST LAKE HILLS**  
  
5300 TANYA DRIVE  
NANAIMO, BC

DISTRICT GROUP

FOURPLEX C - FRONT  
& REAR ELEVATIONS

PROJECT NUMBER: 24-000222  
PLOT DATE: 2024-11-12 12:00:40 PM  
DRAWN BY: SG

A-1.11

SCALE: 1/4" = 1'-0"

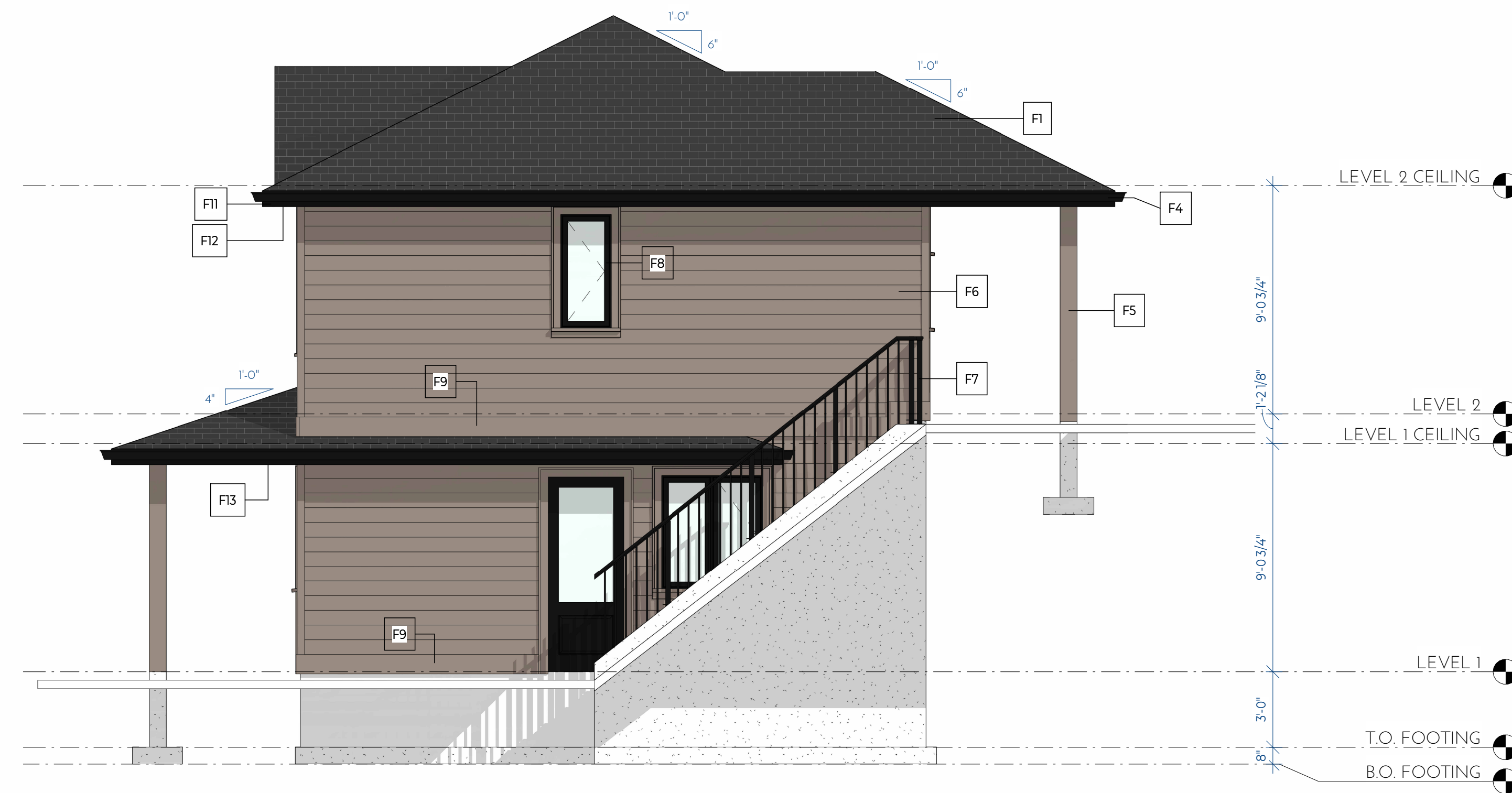


# LOST LAKE HILLS

## UNITS TYPE C



1 LEFT ELEVATION  
1/4" = 1'-0"



2 RIGHT ELEVATION  
1/4" = 1'-0"



### EXTERIOR FINISHES:

- F1 - IKO LAMINATED ARCHITECTURAL ROOFING SHINGLES  
COLOUR: DUAL BLACK
- F2 - FIBER CEMENT SIDEWALL SHINGLES - 7 INCH EXPOSURE  
COLOUR: ALLURA - VIRTUAL TAUPE
- F3 - 5/4 X 6 ON 5/4 X 10 BARGEBOARD  
COLOUR: BLACK
- F4 - 5" "K" STYLE ALUMINUM GUTTER  
COLOUR: BLACK
- F5 - DOUGLAS FIR TIMBER POST  
COLOUR: TIMBER BARK SOLID STAIN
- F6 - FIBER CEMENT LAP SIDING - 7 INCH EXPOSURE  
COLOUR: ALLURA - VIRTUAL TAUPE
- F7 - 42" HIGH ALUMINUM PICKET RAILING  
COLOUR: BLACK
- F8 - VINYL WINDOWS  
COLOUR: BLACK EXTERIOR, WHITE INTERIOR
- F9 - 5/4 X 10 BANDBOARD  
COLOUR: ALLURA - VIRTUAL TAUPE
- F10 - FIBER CEMENT BOARD AND BATTEN  
COLOUR: ALLURA - VIRTUAL TAUPE
- F11 - 5/4 X 8 FASCIA  
COLOUR: BLACK
- F12 - ALUMINUM VENTED SOFFITS  
COLOUR: BLACK



ALLURA FIBRE CEMENT - "VIRTUAL TAUPE"



SYLVAIN GIROUX  
DESIGNS

3093 SWALLOW CRESCENT  
NANOOSE BAY, BC  
(250) 954-7347 SYLVAIN@SGRDESIGN.CA

NO.	DESCRIPTION	DATE
1	ISSUED FOR DEVELOPMENT PERMIT	241003
2	COLOUR ADDED TO ELEVATIONS	241112

DRAWINGS AND SPECIFICATIONS, AS INSTRUMENTS OF SERVICE, ARE THE PROPERTY OF SGR DESIGN LTD. THE COPYRIGHT IN THE SAME BEING RESERVED TO THEM. NO REPRODUCTION IS ALLOWED WITHOUT THE PERMISSION OF SGR DESIGN LTD. AND WHEN MADE MUST BEAR ITS NAME. ALL PRINTS TO BE RETURNED.

THIS DRAWING MUST NOT BE SCALED. THE CONTRACTOR IS TO VERIFY ALL DRAWING DIMENSIONS AND DATA NOTED HEREIN WITH CONDITIONS ON THE SITE AND IS HELD RESPONSIBLE FOR REPORTING DISCREPANCIES TO SGR DESIGN LTD. THIS DRAWING IS NOT TO BE USED FOR CONSTRUCTION PURPOSES UNTIL SIGNED BY THE CONSULTANT.

PROJECT:

LOST LAKE HILLS

5300 TANYA DRIVE  
NANAIMO, BC

DISTRICT GROUP

FOURPLEX C - LEFT &  
RIGHT ELEVATIONS

PROJECT NUMBER 24-000222  
PLOT DATE 2024-11-12 12:02:42 PM  
DRAWN BY SG

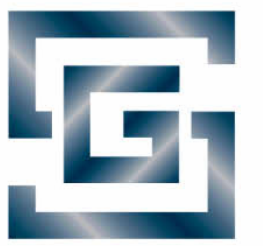
A-1.12

SCALE 1/4" = 1'-0"



# LOST LAKE HILLS

## UNITS TYPE D



SYLVAIN GIROUX  
DESIGNS

3093 SWALLOW CRESCENT  
NANOOSE BAY, BC  
(250) 954-7347 SYLVAIN@SGRDESIGN.CA



① FRONT ELEVATION  
1/4" = 1'-0"



② REAR ELEVATION  
1/4" = 1'-0"

EXTERIOR FINISHES:

F1 - IKO LAMINATED ARCHITECTURAL ROOFING SHINGLES  
COLOUR: DUAL BLACK  
F2 - FIBER CEMENT SIDEWALL SHINGLES - 7 INCH EXPOSURE  
COLOUR: ALLURA - URBANE BRONZE  
F3 - 5/4 X 6 ON 5/4 X 10 BARGEBOARD  
COLOUR: BLACK  
F4 - 5" "K" STYLE ALUMINUM GUTTER  
COLOUR: BLACK

F5 - DOUGLAS FIR TIMBER POST  
COLOUR: URBANE BRONZE SOLID STAIN  
F6 - FIBER CEMENT LAP SIDING - 7 INCH EXPOSURE  
COLOUR: ALLURA - URBANE BRONZE  
F7 - 42" HIGH ALUMINUM PICKET RAILING  
COLOUR: BLACK  
F8 - VINYL WINDOWS  
COLOUR: BLACK EXTERIOR, WHITE INTERIOR

F9 - 5/4 X 10 BANDBOARD  
COLOUR: URBANE BRONZE / MORRIS ROOM GRAY  
F10 - FIBER CEMENT BOARD AND BATTEN  
COLOUR: ALLURA - MORRIS ROOM GRAY  
F11 - 5/4 X 8 FASCIA  
COLOUR: BLACK  
F12 - ALUMINUM VENTED SOFFITS  
COLOUR: BLACK



ALLURA FIBRE CEMENT "MORRIS ROOM GRAY"



ALLURA FIBRE CEMENT "URBANE BRONZE"

NO.	DESCRIPTION	DATE
1	ISSUED FOR DEVELOPMENT PERMIT	241003
2	COLOUR ADDED TO ELEVATIONS	241112

DRAWINGS AND SPECIFICATIONS, AS INSTRUMENTS OF SERVICE, ARE THE PROPERTY OF SGR DESIGN LTD. THE COPYRIGHT IN THE SAME BEING RESERVED TO THEM. NO REPRODUCTION IS ALLOWED WITHOUT THE PERMISSION OF SGR DESIGN LTD. AND WHEN MADE MUST BEAR ITS NAME. ALL PRINTS TO BE RETURNED.

THIS DRAWING MUST NOT BE SCALED. THE CONTRACTOR IS TO VERIFY ALL DRAWING DIMENSIONS AND DATA NOTED HEREIN WITH CONDITIONS ON THE SITE AND IS HELD RESPONSIBLE FOR REPORTING DISCREPANCIES TO SGR DESIGN LTD. THIS DRAWING IS NOT TO BE USED FOR CONSTRUCTION PURPOSES UNTIL SIGNED BY THE CONSULTANT.

PROJECT:  
**LOST LAKE HILLS**  
  
5300 TANYA DRIVE  
NANAIMO, BC

DISTRICT GROUP

FOURPLEX D - FRONT & REAR ELEVATIONS

PROJECT NUMBER: 24-000222  
PLOT DATE: 2024-11-12 3:02:18 PM  
DRAWN BY: SG

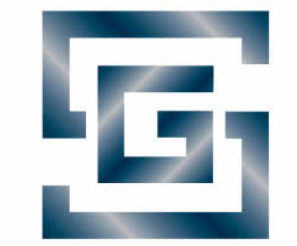
A-1.15

SCALE: 1/4" = 1'-0"



# LOST LAKE HILLS

## UNITS TYPE D

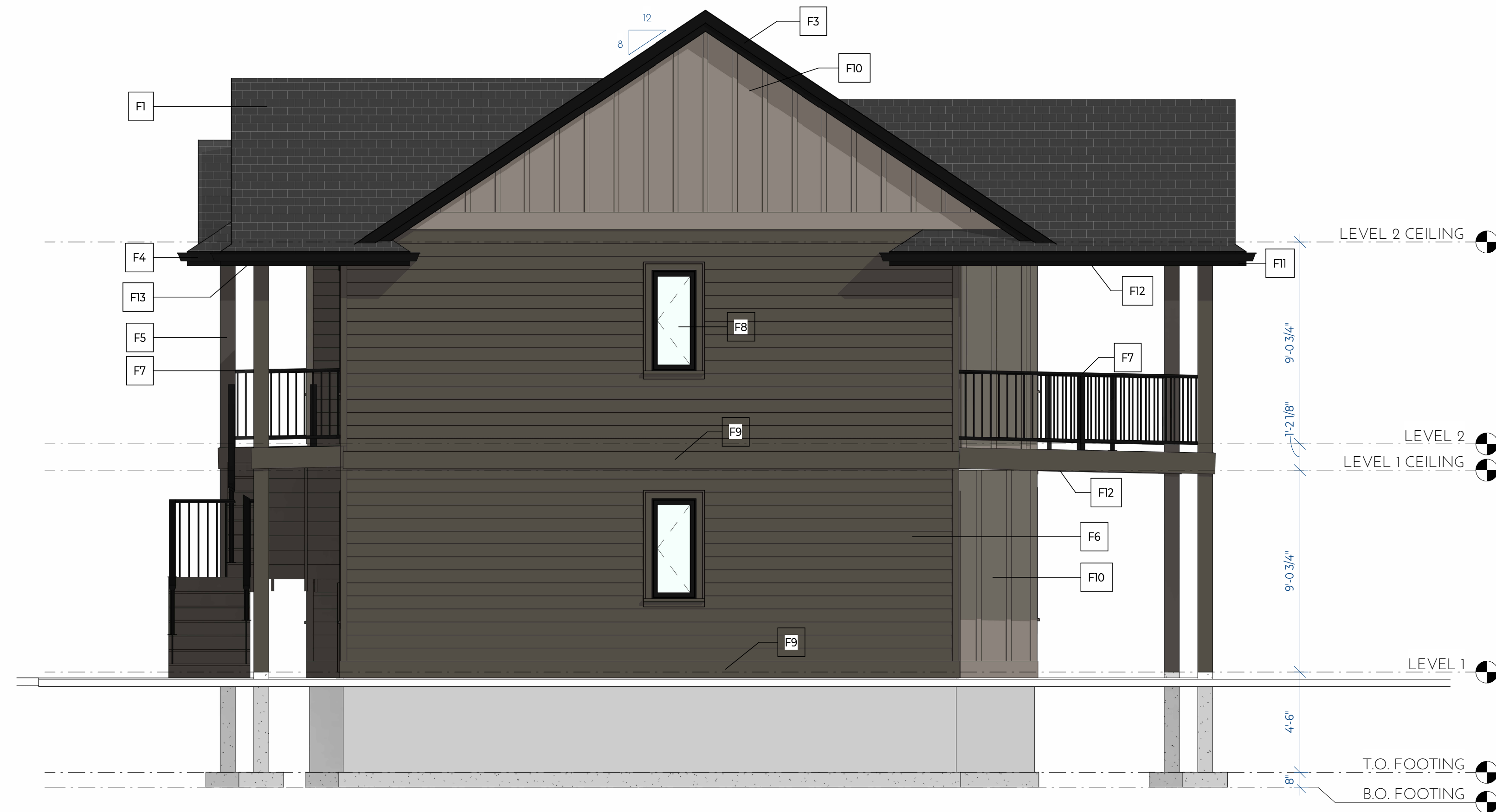


SYLVAIN GIROUX  
DESIGNS

3093 SWALLOW CRESCENT  
NANOOSE BAY, BC  
(250) 954-7347 SYLVAIN@SGRDESIGN.CA



① LEFT ELEVATION  
1/4" = 1'-0"



② RIGHT ELEVATION  
1/4" = 1'-0"



- EXTERIOR FINISHES:**
- F1 - IKO LAMINATED ARCHITECTURAL ROOFING SHINGLES  
COLOUR: DUAL BLACK
  - F2- FIBER CEMENT SIDEWALL SHINGLES - 7 INCH EXPOSURE  
COLOUR: ALLURA - URBANE BRONZE
  - F3- 5/4 X 6 ON 5/4 X 10 BARGEBOARD  
COLOUR: BLACK
  - F4- 5" "K" STYLE ALUMINUM GUTTER  
COLOUR: BLACK
  - F5- DOUGLAS FIR TIMBER POST  
COLOUR: URBANE BRONZE SOLID STAIN
  - F6- FIBER CEMENT LAP SIDING - 7 INCH EXPOSURE  
COLOUR: ALLURA - URBANE BRONZE
  - F7- 42" HIGH ALUMINUM PICKET RAILING  
COLOUR: BLACK
  - F8- VINYL WINDOWS  
COLOUR: BLACK EXTERIOR, WHITE INTERIOR
  - F9- 5/4 X 10 BANDBOARD  
COLOUR: URBANE BRONZE / MORRIS ROOM GRAY
  - F10- FIBER CEMENT BOARD AND BATTEN  
COLOUR: ALLURA - MORRIS ROOM GRAY
  - F11- 5/4 X 8 FASCIA  
COLOUR: BLACK
  - F12- ALUMINUM VENTED SOFFITS  
COLOUR: BLACK



ALLURA FIBRE CEMENT "MORRIS ROOM GRAY"



ALLURA FIBRE CEMENT "URBANE BRONZE"

NO.	DESCRIPTION	DATE
1	ISSUED FOR DEVELOPMENT PERMIT	241003
2	COLOUR ADDED TO ELEVATIONS	241112

DRAWINGS AND SPECIFICATIONS, AS INSTRUMENTS OF SERVICE, ARE THE PROPERTY OF SGR DESIGN LTD. THE COPYRIGHT IN THE SAME BEING RESERVED TO THEM. NO REPRODUCTION IS ALLOWED WITHOUT THE PERMISSION OF SGR DESIGN LTD. AND WHEN MADE MUST BEAR ITS NAME. ALL PRINTS TO BE RETURNED.

THIS DRAWING MUST NOT BE SCALED. THE CONTRACTOR IS TO VERIFY ALL DRAWING DIMENSIONS AND DATA NOTED HEREIN WITH CONDITIONS ON THE SITE AND IS HELD RESPONSIBLE FOR REPORTING DISCREPANCIES TO SGR DESIGN LTD. THIS DRAWING IS NOT TO BE USED FOR CONSTRUCTION PURPOSES UNTIL SIGNED BY THE CONSULTANT.

PROJECT:  
**LOST LAKE HILLS**  
  
5300 TANYA DRIVE  
NANAIMO, BC

DISTRICT GROUP

FOURPLEX D - LEFT &  
RIGHT ELEVATIONS

PROJECT NUMBER: 24-000222  
PLOT DATE: 2024-11-12 3:35:03 PM  
DRAWN BY: SG

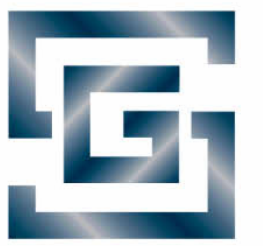
A-1.16

SCALE: 1/4" = 1'-0"



# LOST LAKE HILLS

## UNITS TYPE E



SYLVAIN GIROUX  
DESIGNS

3093 SWALLOW CRESCENT  
NANOOSE BAY, BC  
(250) 954-7347 SYLVAIN@SGRDESIGN.CA



1 FRONT ELEVATION  
1/4" = 1'-0"

EXTERIOR FINISHES:

- |  |   |  |
|--|---|--|
| F1 - IKO LAMINATED ARCHITECTURAL ROOFING SHINGLES<br>COLOUR: DUAL BLACK              | F5 - DOUGLAS FIR TIMBER POST<br>COLOUR: GRAY CLOUD SOLID STAIN                | F9 - 5/4 X 10 BANDBOARD<br>COLOUR: GRAY CLOUD                      |
| F2 - FIBER CEMENT SIDEWALL SHINGLES - 7 INCH EXPOSURE<br>COLOUR: ALLURA - GRAY CLOUD | F6 - FIBER CEMENT LAP SIDING - 7 INCH EXPOSURE<br>COLOUR: ALLURA - GRAY CLOUD | F10 - FIBER CEMENT BOARD AND BATTEN<br>COLOUR: ALLURA - GRAY CLOUD |
| F3 - 5/4 X 6 ON 5/4 X 10 BARGEBOARD<br>COLOUR: BLACK                                 | F7 - 42" HIGH ALUMINUM PICKET RAILING<br>COLOUR: BLACK                        | F11 - 5/4 X 8 FASCIA<br>COLOUR: BLACK                              |
| F4 - 5" "K" STYLE ALUMINUM GUTTER<br>COLOUR: BLACK                                   | F8 - VINYL WINDOWS<br>COLOUR: BLACK EXTERIOR, WHITE INTERIOR                  | F12 - ALUMINUM VENTED SOFFITS<br>COLOUR: BLACK                     |



ALLURA FIBRE CEMENT - "GRAY CLOUDS"



2 REAR ELEVATION  
1/4" = 1'-0"

NO.	DESCRIPTION	DATE
1	ISSUED FOR DEVELOPMENT PERMIT	2410.03
2	COLOUR ADDED TO ELEVATIONS	2411.12

DRAWINGS AND SPECIFICATIONS, AS INSTRUMENTS OF SERVICE, ARE THE PROPERTY OF SGR DESIGN LTD. THE COPYRIGHT IN THE SAME BEING RESERVED TO THEM. NO REPRODUCTION IS ALLOWED WITHOUT THE PERMISSION OF SGR DESIGN LTD. AND WHEN MADE MUST BEAR ITS NAME. ALL PRINTS TO BE RETURNED.

THIS DRAWING MUST NOT BE SCALED. THE CONTRACTOR IS TO VERIFY ALL DRAWING DIMENSIONS AND DATA NOTED HEREIN WITH CONDITIONS ON THE SITE AND IS HELD RESPONSIBLE FOR REPORTING DISCREPANCIES TO SGR DESIGN LTD. THIS DRAWING IS NOT TO BE USED FOR CONSTRUCTION PURPOSES UNTIL SIGNED BY THE CONSULTANT.

PROJECT:  
**LOST LAKE HILLS**  
  
5300 TANYA DRIVE  
NANAIMO, BC

DISTRICT GROUP

FOURPLEX E - FRONT  
& REAR ELEVATIONS

PROJECT NUMBER: 24-000222  
PLOT DATE: 2024-11-12 2:17:18 PM  
DRAWN BY: SG

A-1.19

SCALE: 1/4" = 1'-0"



# LOST LAKE HILLS

## UNITS TYPE E



1 RIGHT ELEVATION  
1/4" = 1'-0"



2 LEFT ELEVATION  
1/4" = 1'-0"



### EXTERIOR FINISHES:

- F1 - IKO LAMINATED ARCHITECTURAL ROOFING SHINGLES  
COLOUR: DUAL BLACK
- F2 - FIBER CEMENT SIDEWALL SHINGLES - 7 INCH EXPOSURE  
COLOUR: ALLURA - GRAY CLOUDS
- F3 - 5/4 X 6 ON 5/4 X 10 BARGEBOARD  
COLOUR: BLACK
- F4 - 5" "K" STYLE ALUMINUM GUTTER  
COLOUR: BLACK
- F5 - DOUGLAS FIR TIMBER POST  
COLOUR: GRAY CLOUDS SOLID STAIN
- F6 - FIBER CEMENT LAP SIDING - 7 INCH EXPOSURE  
COLOUR: ALLURA - GRAY CLOUDS
- F7 - 42" HIGH ALUMINUM PICKET RAILING  
COLOUR: BLACK
- F8 - VINYL WINDOWS  
COLOUR: BLACK EXTERIOR, WHITE INTERIOR
- F9 - 5/4 X 10 BANDBOARD  
COLOUR: GRAY CLOUDS
- F10 - FIBER CEMENT BOARD AND BATTEN  
COLOUR: ALLURA - GRAY CLOUDS
- F11 - 5/4 X 8 FASCIA  
COLOUR: BLACK
- F12 - ALUMINUM VENTED SOFFITS  
COLOUR: BLACK



ALLURA FIBRE CEMENT - "GRAY CLOUDS"



SYLVAIN GIROUX  
DESIGNS

3093 SWALLOW CRESCENT  
NANOOSE BAY, BC  
(250) 954-7347 SYLVAIN@SGRDESIGN.CA

NO.	DESCRIPTION	DATE
1	ISSUED FOR DEVELOPMENT PERMIT	241003
2	COLOUR ADDED TO ELEVATIONS	241112

DRAWINGS AND SPECIFICATIONS, AS INSTRUMENTS OF SERVICE, ARE THE PROPERTY OF SGR DESIGN LTD. THE COPYRIGHT IN THE SAME BEING RESERVED TO THEM. NO REPRODUCTION IS ALLOWED WITHOUT THE PERMISSION OF SGR DESIGN LTD. AND WHEN MADE MUST BEAR ITS NAME. ALL PRINTS TO BE RETURNED.

THIS DRAWING MUST NOT BE SCALED. THE CONTRACTOR IS TO VERIFY ALL DRAWING DIMENSIONS AND DATA NOTED HEREIN WITH CONDITIONS ON THE SITE AND IS HELD RESPONSIBLE FOR REPORTING DISCREPANCIES TO SGR DESIGN LTD. THIS DRAWING IS NOT TO BE USED FOR CONSTRUCTION PURPOSES UNTIL SIGNED BY THE CONSULTANT.

PROJECT:

LOST LAKE HILLS

5300 TANYA DRIVE  
NANAIMO, BC

DISTRICT GROUP

FOURPLEX E - RIGHT &  
LEFT ELEVATIONS

PROJECT NUMBER 24-000222  
PLOT DATE 2024-11-12 2:18:41 PM  
DRAWN BY SG

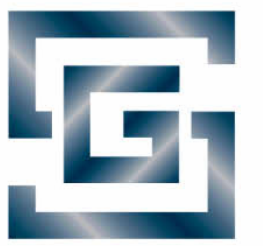
A-1.20

SCALE 1/4" = 1'-0"



# LOST LAKE HILLS

## UNITS TYPE F



SYLVAIN GIROUX  
DESIGNS

3093 SWALLOW CRESCENT  
NANOOSE BAY, BC  
(250) 954-7347 SYLVAIN@SGRDESIGN.CA



1 FRONT ELEVATION  
1/4" = 1'-0"



2 REAR ELEVATION  
1/4" = 1'-0"

EXTERIOR FINISHES:

- |  |   |  |
|--|---|--|
| F1 - IKO LAMINATED ARCHITECTURAL ROOFING SHINGLES<br>COLOUR: DUAL BLACK            | F5 - DOUGLAS FIR TIMBER POST<br>COLOUR: TIMBER BARK SOLID STAIN             | F9 - 5/4 X 10 BANDBOARD<br>COLOUR: IRON ORE                      |
| F2 - FIBER CEMENT SIDEWALL SHINGLES - 7 INCH EXPOSURE<br>COLOUR: ALLURA - IRON ORE | F6 - FIBER CEMENT LAP SIDING - 7 INCH EXPOSURE<br>COLOUR: ALLURA - IRON ORE | F10 - FIBER CEMENT BOARD AND BATTEN<br>COLOUR: ALLURA - IRON ORE |
| F3 - 5/4 X 6 ON 5/4 X 10 BARGEBOARD<br>COLOUR: BLACK                               | F7 - 42" HIGH ALUMINUM PICKET RAILING<br>COLOUR: BLACK                      | F11 - 5/4 X 8 FASCIA<br>COLOUR: BLACK                            |
| F4 - 5" "K" STYLE ALUMINUM GUTTER<br>COLOUR: BLACK                                 | F8 - VINYL WINDOWS<br>COLOUR: BLACK EXTERIOR, WHITE INTERIOR                | F12 - ALUMINUM VENTED SOFFITS<br>COLOUR: BLACK                   |



ALLURA FIBRE CEMENT - "IRON ORE"

NO.	DESCRIPTION	DATE
1	ISSUED FOR DEVELOPMENT PERMIT	241005
2	COLOUR ADDED TO ELEVATIONS	241112

DRAWINGS AND SPECIFICATIONS, AS INSTRUMENTS OF SERVICE, ARE THE PROPERTY OF SGR DESIGN LTD. THE COPYRIGHT IN THE SAME BEING RESERVED TO THEM. NO REPRODUCTION IS ALLOWED WITHOUT THE PERMISSION OF SGR DESIGN LTD. AND WHEN MADE MUST BEAR ITS NAME. ALL PRINTS TO BE RETURNED.

THIS DRAWING MUST NOT BE SCALED. THE CONTRACTOR IS TO VERIFY ALL DRAWING DIMENSIONS AND DATA NOTED HEREIN WITH CONDITIONS ON THE SITE AND IS HELD RESPONSIBLE FOR REPORTING DISCREPANCIES TO SGR DESIGN LTD. THIS DRAWING IS NOT TO BE USED FOR CONSTRUCTION PURPOSES UNTIL SIGNED BY THE CONSULTANT.

PROJECT:  
**LOST LAKE HILLS**  
  
5300 TANYA DRIVE  
NANAIMO, BC

DISTRICT GROUP  
  
FOURPLEX F - FRONT  
& REAR ELEVATIONS

PROJECT NUMBER: 23-000801  
PLOT DATE: 2024-11-12 3:41:50 PM  
DRAWN BY: SG

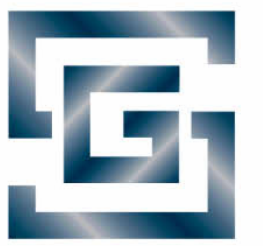
A-1.23

SCALE: 1/4" = 1'-0"



# LOST LAKE HILLS

## UNITS TYPE F



SYLVAIN GIROUX  
DESIGNS

3093 SWALLOW CRESCENT  
NANOOSE BAY, BC  
(250) 954-7347 SYLVAIN@SGRDESIGN.CA



1 LEFT ELEVATION  
1/4" = 1'-0"



2 RIGHT ELEVATION  
1/4" = 1'-0"

### EXTERIOR FINISHES:

- F1 - IKO LAMINATED ARCHITECTURAL ROOFING SHINGLES  
COLOUR: DUAL BLACK
- F2 - FIBER CEMENT SIDEWALL SHINGLES - 7 INCH EXPOSURE  
COLOUR: ALLURA - IRON ORE
- F3 - 5/4 X 6 ON 5/4 X 10 BARGEBOARD  
COLOUR: BLACK
- F4 - 5" "K" STYLE ALUMINUM GUTTER  
COLOUR: BLACK
- F5 - DOUGLAS FIR TIMBER POST  
COLOUR: TIMBER BARK SOLID STAIN
- F6 - FIBER CEMENT LAP SIDING - 7 INCH EXPOSURE  
COLOUR: ALLURA - IRON ORE
- F7 - 42" HIGH ALUMINUM PICKET RAILING  
COLOUR: BLACK
- F8 - VINYL WINDOWS  
COLOUR: BLACK EXTERIOR, WHITE INTERIOR
- F9 - 5/4 X 10 BANDBOARD  
COLOUR: IRON ORE
- F10 - FIBER CEMENT BOARD AND BATTEN  
COLOUR: ALLURA - IRON ORE
- F11 - 5/4 X 8 FASCIA  
COLOUR: BLACK
- F12 - ALUMINUM VENTED SOFFITS  
COLOUR: BLACK



ALLURA FIBRE CEMENT - "IRON ORE"

NO.	DESCRIPTION	DATE
1	ISSUED FOR DEVELOPMENT PERMIT	241005
2	COLOUR ADDED TO ELEVATIONS	241112

DRAWINGS AND SPECIFICATIONS, AS INSTRUMENTS OF SERVICE, ARE THE PROPERTY OF SGR DESIGN LTD. THE COPYRIGHT IN THE SAME BEING RESERVED TO THEM. NO REPRODUCTION IS ALLOWED WITHOUT THE PERMISSION OF SGR DESIGN LTD. AND WHEN MADE MUST BEAR ITS NAME. ALL PRINTS TO BE RETURNED.

THIS DRAWING MUST NOT BE SCALED. THE CONTRACTOR IS TO VERIFY ALL DRAWING DIMENSIONS AND DATA NOTED HEREIN WITH CONDITIONS ON THE SITE AND IS HELD RESPONSIBLE FOR REPORTING DISCREPANCIES TO SGR DESIGN LTD. THIS DRAWING IS NOT TO BE USED FOR CONSTRUCTION PURPOSES UNTIL SIGNED BY THE CONSULTANT.

PROJECT:

LOST LAKE HILLS

5300 TANYA DRIVE  
NANAIMO, BC

DISTRICT GROUP

FOURPLEX F - LEFT &  
RIGHT ELEVATIONS

PROJECT NUMBER 23-000801  
PLOT DATE 2024-11-12 3:40:33 PM  
DRAWN BY SG

A-1.24

SCALE 1/4" = 1'-0"